

SDB Small Diameter Beveler

WACHS E.H.WACHS®

E.H. Wachs® SDB line of small diameter bevelers have been engineered for fast, precise onsite facing, beveling, compound beveling and counterboring of light and heavy wall pipe, tube or casing. Proven workhorses, they set up quickly with a self centering mandrel and chuck assembly mounting to the pipe I.D. Their highly productive design means one person can setup, operate and create a perfect weld prep in minutes.

SDB BEVELER MODELS

MODEL	PIPE RANGE (in)	PIPE RANGE (mm)
103/3	ID .875-4.5in OD	ID 22.2-114 mm OD
206/2	ID 1.91-6.625in OD	ID 48.5-168mm OD
412/2	ID 3.80-12.02in OD	ID 96.5 - 305.3mm OD

SDB 103/3 PIPE END PREP BEVELER

Face, bevel and counterbore simultaneously on carbon, stainless and high alloy steels. Machine boiler tubes, heavy wall pipe and thick wall tubing. Prep elbows and face flanges* using only one machine. Fast, accurate weld preps on pipe and tube from 0.875in I.D. through 4.5in O.D. (22.2 mm – 114 mm) and flanges 2in I.D. (50.8 mm) through 6in O.D. (152.4 mm). Available in air or electric.

SDB 206/2 PIPE END PREP BEVELER

Bevel, counterbore, face and compound bevel pipe and tube from 1.91in I.D. through 6.625in O.D. (48.5 mm – 168 mm) and face flanges* from 3in I.D. through 13in O.D. (76.2 mm – 330.2 mm), regardless of material wall thickness. Only a 2.25in (57 mm) radial clearance is required. Available in air, electric or hydraulic.

SDB 412/2 PIPE END PREP BEVELER

Heavy-duty and compact. Designed to face, bevel, compound bevel and counter bore 3.80in I.D. through 12.02in O.D. (96.5 mm – 305.3 mm) pipe or tube, up to 1.125in (29 mm) wall thickness and face flanges* 4in I.D. through 24in O.D. (101.6 mm through 609.6 mm). Available in air, electric or hydraulic.



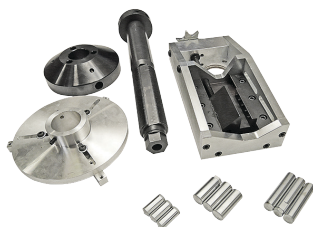
SDB 103



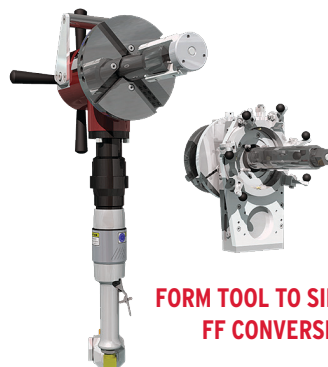
SDB 206



SDB 412



SDB TO FF CONVERSION KIT: HEAD, MANDREL, LEGS, & FASTENERS



FORM TOOL TO SINGLE POINT FF CONVERSION KIT