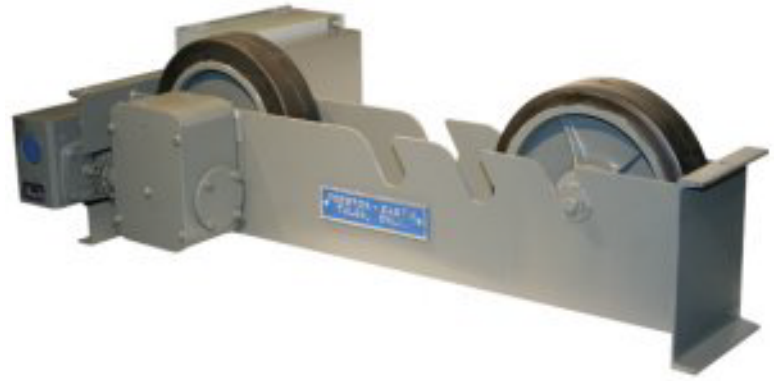


MODEL TDRA-3 DRIVER
MODEL TIRA-3 IDLER



SPECIFICATIONS

- WEIGHT CAPACITY : 3 Tons (Per Driver/Idler Combination)
- TURNING CAPACITY : 9,000 Pounds
- TRACTIVE PULL : 1,250 Pounds
- DIAMETER RANGE : 6" Thru 60" Diameter
- SPEED RANGE : 1.5 to 45 IPM
- MOTOR SIZE : 1/4 Horsepower, variable speed DC
- TIRES : 12" x 3 1/2" Solid Rubber

