

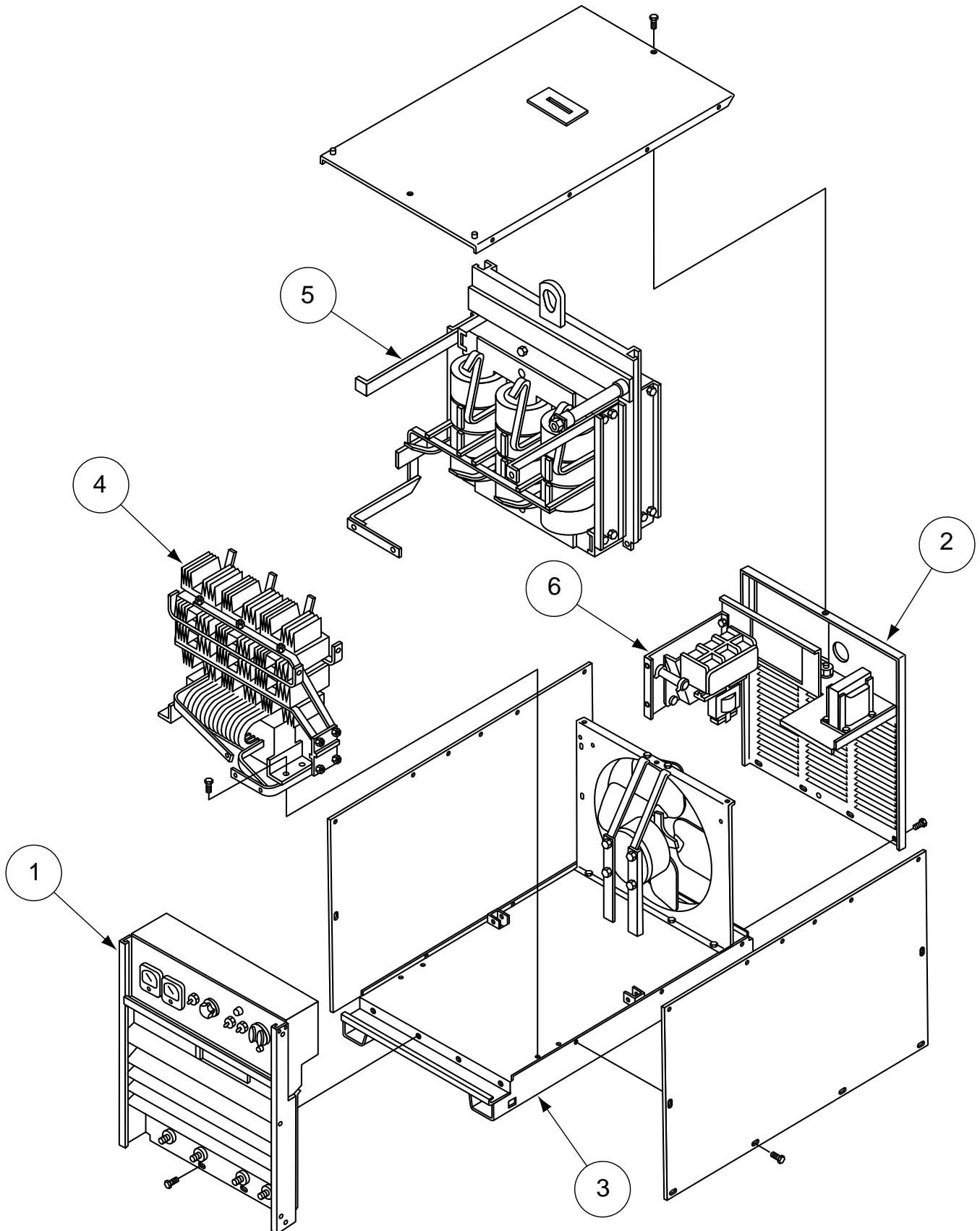
PARTS LIST FOR

DC-1000

DC-1000



ILLUSTRATION OF SUB-ASSEMBLIES



DC-1000

For Codes: 8631 to 10293

Do Not use this Parts List for a machine if its code number is not listed. Contact the Service Department for any code numbers not listed.

Use the Illustration of Sub-Assemblies page and the table below to determine which sub assembly page and column the desired part is located on for your particular code machine.

Sub Assembly Item No. →			1	2	3	4	5	6	
SUB ASSEMBLY PAGE NAME →	Optional Equipment	Miscellaneous Items	Case Front & Control Box	Case Back Assembly	Base, Fan, Roof and Case Sides	Output Rectifier & Choke Assembly	Lift Bale & Transformer Assembly	S78 Contactor	
PAGE NO. →	P146-B.1	P146-B.2	P146-C	P146-D	P146-E	P146-F	P146-G	P28-J	
CODE NO. ↓									
8631		1	1	1	1	1	1	34	
8632		1	1	1	1	1	1	34	
8640		1	1	1	1	1	1	34	
8641		1	1	1	1	1	1	34	
8642		1	1	1	1	1	1	34	
8644		1	1	1	1	1	1	34	
8656		1	1	1	1	1	1	34	
8687		1	1	1	1	1	1	34	
8721		1	1	1	1	1	1	34	
8795		1	1	1	1	1	1	34	
8796		1	1	1	1	1	1	34	
8797		1	1	1	1	1	1	34	
8812		1	1	1	1	1	1	34	
8905		1	1	1	1	1	1	34	
8961		1	1	1	1	1	1	34	
8964		1	1	1	1	1	1	34	
8981		1	1	1	1	1	1	34	
9098		1	1	1	1	1	1	34	
9099		1	1	1	1	1	1	34	
9151		1	1	1	1	1	1	34	
9337		1	1	1	1	1	1	34	
9475		1	1	1	1	1	1	34	
9572		1	1	1	1	1	1	34	
9573		1	1	1	1	1	1	34	
9574		1	1	1	1	1	1	34	
9575		1	1	1	1	1	1	34	
9609		1	1	1	1	1	1	34	
9622		1	1	1	1	1	1	34	
9623		1	1	1	1	1	1	34	

DC-1000

For Codes: 8631 to 10293

Do Not use this Parts List for a machine if its code number is not listed. Contact the Service Department for any code numbers not listed.

Use the Illustration of Sub-Assemblies page and the table below to determine which sub assembly page and column the desired part is located on for your particular code machine.

Sub Assembly Item No.			1	2	3	4	5	6	
SUB ASSEMBLY PAGE NAME	Optional Equipment	Miscellaneous Items	Case Front & Control Box	Case Back Assembly	Base, Fan, Roof and Case Sides	Output Rectifier & Choke Assembly	Lift Bale & Transformer Assembly	S78 Contactor	
PAGE NO.	P146-B.1	P146-B.2	P146-C	P146-D	P146-E	P146-F	P146-G	P28-J	
CODE NO.									
9919		1	2	1	1	1	1	34	
9920		1	2	1	1	1	1	34	
9921		1	2	1	1	1	1	34	
9922		1	2	1	1	1	1	34	
9923		1	2	1	1	1	1	34	
9924		1	2	1	1	1	1	34	
9925		1	2	1	1	1	1	34	
10293		1	2	1	1	1	1	34	

NOTES

DC-1000



OPTIONAL EQUIPMENT LISTING

Miscellaneous Options Available for your machine are listed below:

Indicates a change this printing.

DESCRIPTION	PART NUMBER
Paralleling KitOrder S20428
Remote Output KitOrder K775

MISCELLANEOUS ITEMS
 (THESE ITEMS ARE NOT ILLUSTRATED)

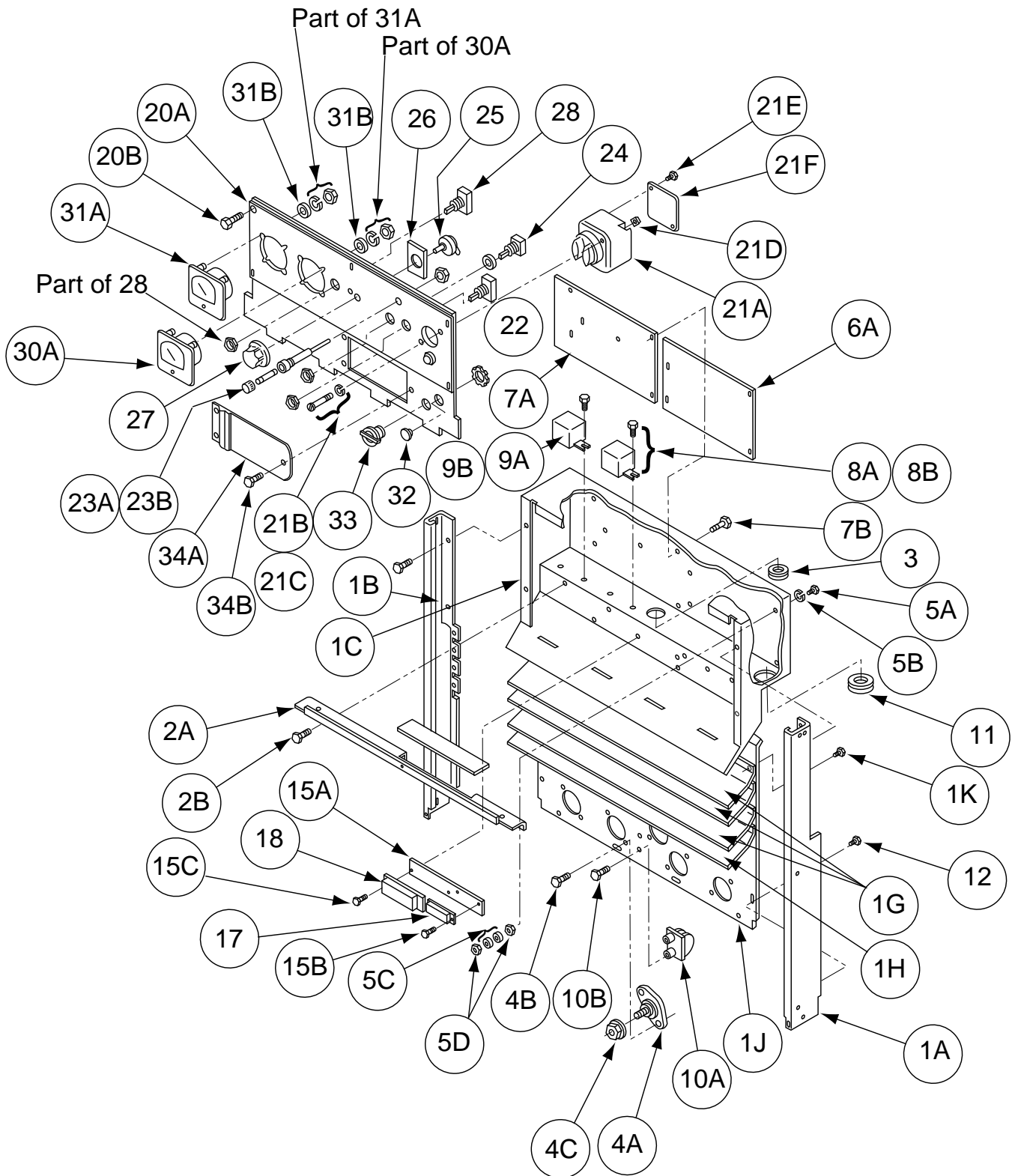
Indicates a change this printing.

Use only the parts marked "x" in the column under the heading number called for in the model index page.

* Recommended Spare Part

DESCRIPTION	PART NO.	QTY.	1	2	3	4	5	6	7	8	9
Caution Decal	S13504	1	X								
Grounding Decal	T13259	1	X								
Warning Decal	T13086-20	1	X								
Instruction Decal	T14751	1	X								
Earth Ground Connection Decal	T13260-4	1	X								

Case Front & Control Box Assembly



Indicates a change this printing.

Use only the parts marked "x" in the column under the heading number called for in the model index page.

* Recommended Spare Part

ITEM	DESCRIPTION	PART NO.	QTY.	1	2	3	4	5	6	7	8	9
1	Front Support & Control Box Assembly, Includes:	L7521-2	1	•	X							
1A	Case Front Support	L7517-1	1	•	X							
1B	Case Front Support	L7517-2	1	•	X							
1C	Control Box	L9006	1	•	X							
1E	Self Tapping Screw (Not Shown)	S8025-65	2	•	X							
1G	Louver	M15391-2	3	•	X							
1H	Louver	M15391-2	1	•	X							
1J	Output Panel	L9005	1	•	X							
1K	Self tapping screw	S8025-65	12	•	X							
1	Front Support & Baffle Assembly, Includes:	L6496	1	X	•							
1A	Case Front Support	L6594-1	1	X	•							
1B	Case Front Support	L6594-21	1	X	•							
1G	Louver	M13971-2	4	X	•							
1K	Self Tapping Screw	S8025-65	8	X	•							
2A	Control Box Partition	M14301	1	X	X							
2B	Self Tapping Screw	S8025-65	3	X	X							
3	Bushing	T14614-1	1	X	•							
3	Bushing	T14614-2	1	•	X							
4A	Output Terminal Assembly	S16656-4	5	•	X							
4A	Output Terminal Assembly	S16656-2	5	X	•							
4B	Thread Forming Screw	S9225-36	8	X	X							
4C	Output Stud Nut	T3960	4	X	X							
5A	Thread Forming Screw	S9225-36	1	X	X							
5B	Lock Washer	T9695-1	1	X	X							
5C	Plain Washer	S9262-27	2	X	X							
5D	#10-24 Hex Nut	CF000010	2	X	X							
6A	Control P.C. Board	G1585	1	X	•							
6A	Control P.C. Board	G1585-2	1	•	X							
6B	P.C. Board Support (Not Shown)	S19300-3	5	X	X							
7A	Firing Circuit P.C. Board	G1486-4	1	X	•							
7A	Firing Circuit P.C. Board	G1486-5	1	•	X							
7B	P.C. Board Support	S19300-3	6	X	X							
8A	Relay	S14293-8	1	X	X							
8B	Self Tapping Screw	S8025-62	2	X	X							
8C	I.D. Sticker (Not Shown)	T12286-4	1	X	X							
9A	Relay	S14293-12	1	X	X							
9B	Self Tapping Screw	S8025-62	1	X	X							
9C	I.D. Sticker (Not Shown)	T12286-2	2	X	X							
10A	Output Snubber	M14312	1	X	•							
10A	Output Snubber	M14312-1	1	•	X							
10B	Self Tapping Screw	S8025-71	2	X	X							
11	Bushing	T12380-1	1	X	X							
12	Self tapping Screw	S8025-70	2	X	X							
13	Decal (Not shown)	T13260-3	1	X	X							
14	Output Terminal Decal (Not Shown)	S19629	1	X	•							
14	Output Terminal Decal (Not Shown)	S20641	1	•	X							
15A	Number Plate	S17160	1	X	X							
15B	Self Tapping screw	S8025-15	2	X	X							
15C	Self Tapping Screw	S8025-62	2	X	X							
16	Terminal Strip Gasket (Not Shown)	T14689	1	X	X							
17	Terminal Strip (6 Terminals)	S8542-7	1	X	X							

#

Indicates a change this printing.

Use only the parts marked "x" in the column under the heading number called for in the model index page.

* Recommended Spare Part

ITEM	DESCRIPTION	PART NO.	QTY.	1	2	3	4	5	6	7	8	9
18	Terminal Strip (5 Terminals)	S14530-11	1	X	X							
19	Control Box Cover (Not Shown)	L9000	1	•	X							
19	Control Box Cover (Not Shown)	L6601	1	X	•							
20A	Nameplate (without meters)	L5961	1	X	•							
20A	Nameplate (without meters)	L8237	1	•	X							
20A	Nameplate (with meters)	L5961-1 Ø	1	X	•							
20A	Nameplate (with meters)	L8237-1	1	•	X							
20B	Self Tapping Screw	S8025-65	9	X	X							
21A	Push Button Assembly	M6574-A	1	X	X							
21B	#10-24 x 2.00 Round Head Screw	CF000104	2	X	X							
21C	Lock Washer	E106A-1	2	X	X							
21D	#10-24 Square Nut	CF000154	2	X	X							
21E	Phillips Round Head Screw	CF000108	5	X	X							
21F	Bottom Cover	T8660	1	X	X							
22	Output Control Switch	T10800-24	1	•	X							
22	Output Control Switch	T11160	1	X	•							
23A	Fuse Holder	S10433-1	1	X	X							
23B	Fuse	T10728-16	1	X	X							
24	Welding Mode Switch (SW4)	T13381-4	1	X	X							
25	Output Control Potentiometer (R1)	T10812-40	1	X	X							
26	Potentiometer Insulation	T12792-1	1	X	X							
27	Knob	T10491	1	X	X							
28	Control Circuit Polarity Switch	T13562	1	X	•							
28	Control Circuit Polarity Switch	T10800-35	1	•	X							
29	Pilot Light	T13486	1	X	X							
30A	D.c. Ammeter (Optional)	M10485-13	1	X	X							
30B	Plain Washer (Not Shown)	S9262-39	4	X	X							
31A	D.C. Voltmeter (Optional)	M10486-3	1	X	X							
31B	Plain Washer	S9262-39	4	X	X							
32	Plug Button	T13597-1	1	X	X							
32	Box Connector (Earlier Machines)	T9639-2	1	X	•							
33	Box Connector	T9639-1	1	X	X							
34A	Access Door	S17293	1	X	X							
34B	Self Tapping screw	S8025-65	3	X	X							

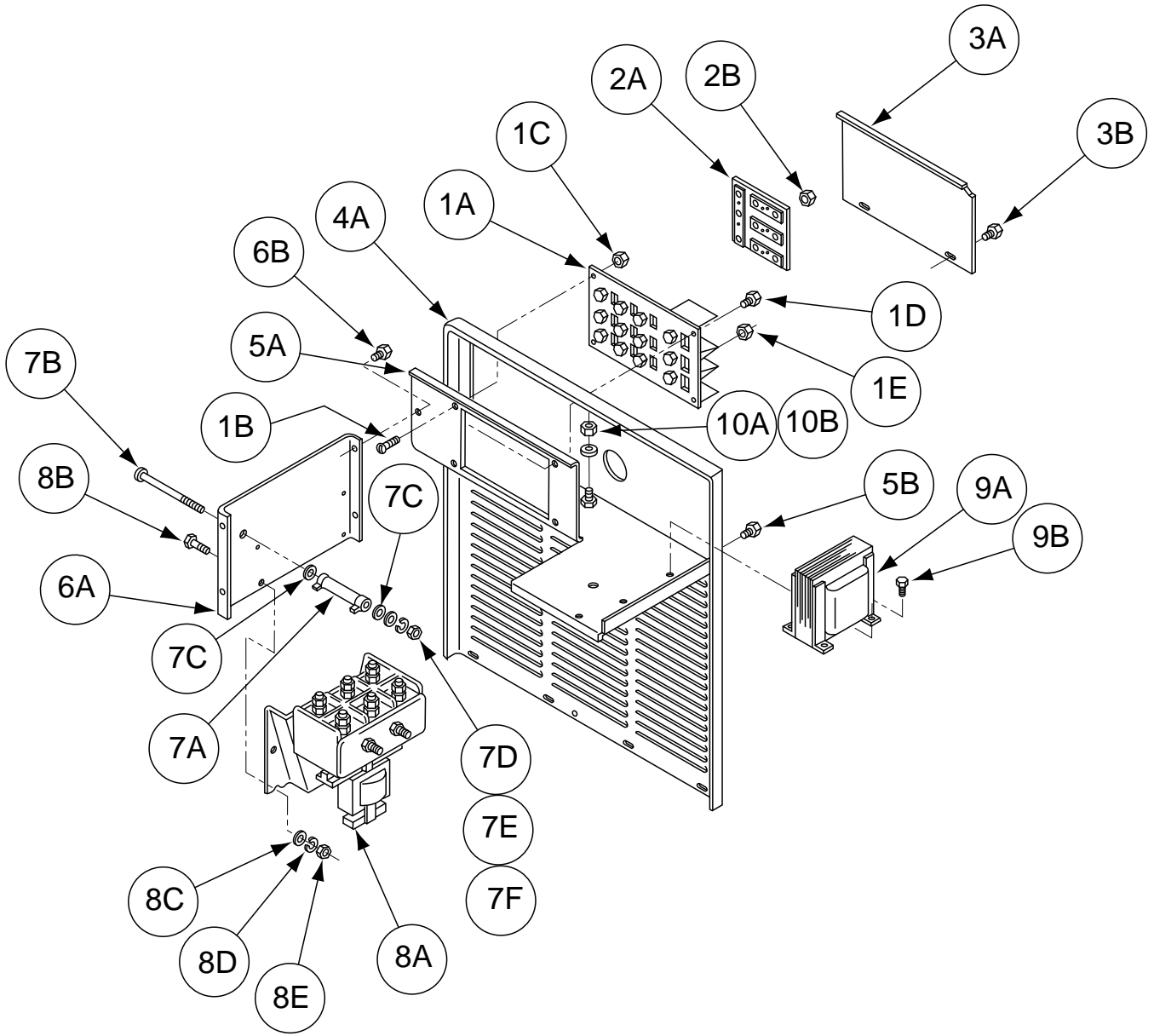
#

NOTES

DC-1000



Case Back Assembly



Indicates a change this printing.

Use only the parts marked "x" in the column under the heading number called for in the model index page.

* Recommended Spare Part

ITEM	DESCRIPTION	PART NO.	QTY.	1	2	3	4	5	6	7	8	9
1A	Stationary Reconnect Panel, Single and Dual Except 380/500 and 460/575	M13544	1	X								
1A	Stationary Reconnect Panel, 380 and 220/380/440	M14354	1	X								
1B	Self Tapping Screw	S8025-70	3	X								
1C	Set Screw	T10082-3	1	X								
1D	Hex Nut	#10-24	1	X								
1E	Hex Jam Nut	T10940-4	3	X								
2A	Moveable Reconnect Panel, Single and Dual Except 380/500 and 460/575 Only	S16215	1	X								
2A	Moveable Reconnect Panel, 380/500 Volt Panel Link, 380 and 220/380/400 Only	S17348	1	X								
	Primary Connection Lead	T14190	9	X								
	Thread Forming Screw	T14723	4	X								
	Plain Washer	S9225-17	13	X								
	Lock Washer	S9225-23	22	X								
	Hex Head Cap Screw	E106A-2	13	X								
	Hex Nut	1/4-20 x .50	4	X								
		1/4-20	4	X								
2B	Hex Nut	3/8-16	9	X								
3A	Access Door	M13448	1	X								
3B	Self Tapping Screw	S8025-65	2	X								
4A	Rear Panel (Gray) (Below Code 9900)	S16223	1	X								
4A	Rear Panel (Red) (Above Code 9900)	S16223-1	1	X								
4B	Self Tapping Screw	S8025-65	8	X								
5A	Input Box	S17159	1	X								
5B	Self Tapping Screw	S8025-65	3	X								
6A	Contactor Mounting Panel	M13589	1	X								
6B	Thread Forming Screw	S9225-8	4	X								
7A	Resistor	S10404-83	1	X								
7B	Round Head Screw	#10-24 x 5.00	1	X								
7C	Insulating Washer	S10773-7	2	X								
7D	Plain Washer	S9262-27	1	X								
7E	Lock Washer	E106A-1	1	X								
7F	Hex Nut	#10-24	1	X								
8A	S-78 Contactor (Less Nvr Coil)	L6200-36A	1	X								
	L6200-36 Contactor Parts	See P28-J	1	X								
	NVR Coil	S-1-9	1	X								
8B	Hex Head Screw	1/4-20 x .625	4	X								
8C	Plain Washer	S9262-98	2	X								
8D	Lock Washer	E106A-2	4	X								
8E	Hex Nut	1/4-20	4	X								
9A	Control Transformer (Codes 8631, 8632, 8641, 8687, 8795, 8961, 8964, 9099, 9572, 9919)	M12390-21	1	X								
9A	Control Transformer (Codes 8640, 8642, 8796, 9098, 9337, 9574, 9622, 9921, 9924)	S17228	1	X								
9A	Control Transformer (Codes 8644, 8797, 9609, 9623, 9923, 9925)	S17286	1	X								
9A	Control Transformer (Codes 8656, 8981, 9475, 9573, 9920)	S17292	1	X								

Indicates a change this printing.

Use only the parts marked "x" in the column under the heading number called for in the model index page.

* Recommended Spare Part

ITEM	DESCRIPTION	PART NO.	QTY.	1	2	3	4	5	6	7	8	9
9A	Control Transformer (Codes 8721, 8905, 9575, 9922, 10293)	S17343	1	X								
9A	Control Transformer (Codes 8812, 9151)	S17535 \emptyset	1	X								
9B	Self Tapping Screw	S8025-65	4	X								
10A	Plain Washer	S9262-121	2	X								
10B	Hex Nut	5/16-18	1	X								

#

\emptyset This part is obsolete and no longer available.

DC-1000

6-22-2000

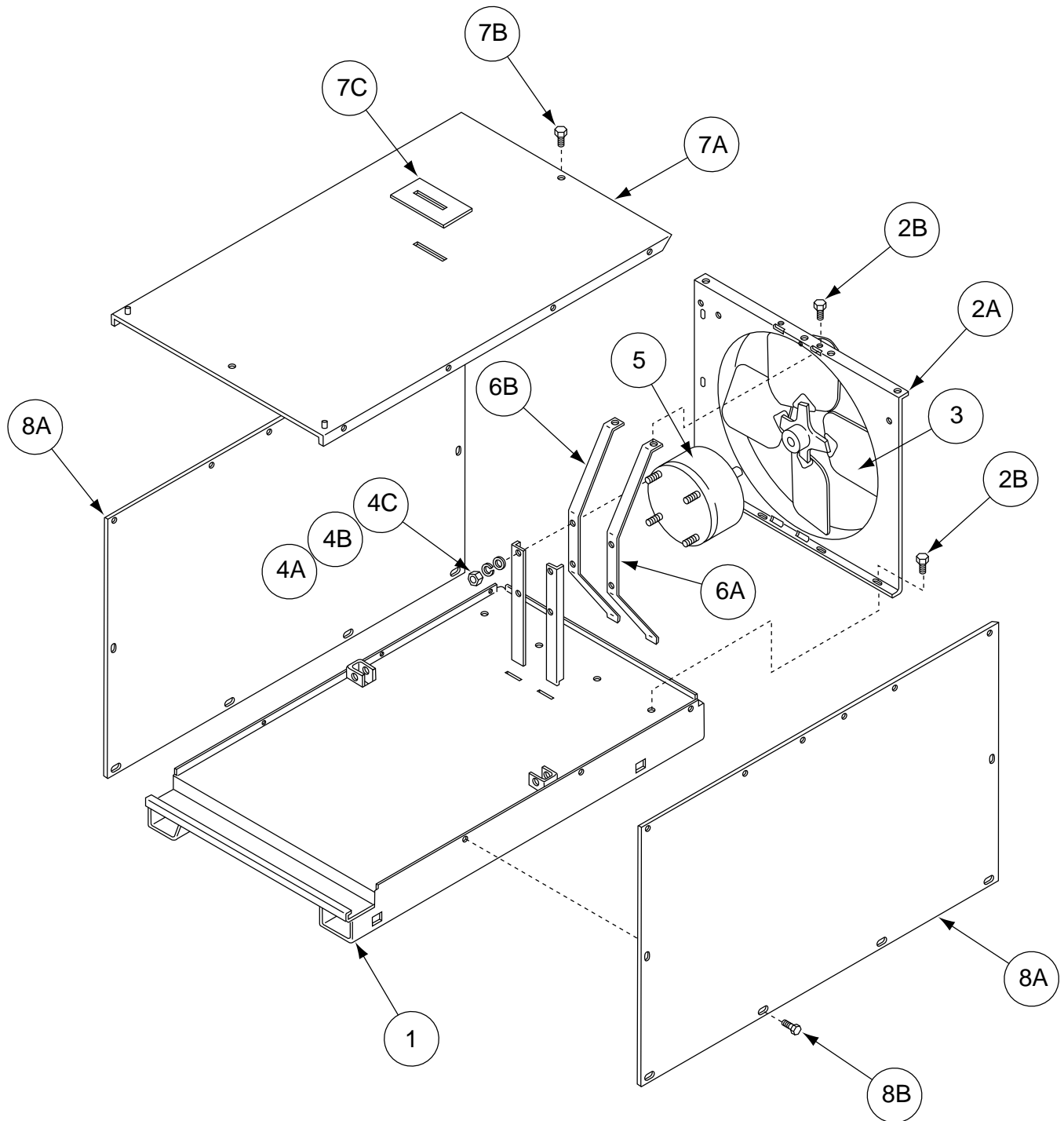


NOTES

DC-1000



Base, Fan, Roof and Case Sides



Indicates a change this printing.

Use only the parts marked "x" in the column under the heading number called for in the model index page.

* Recommended Spare Part

ITEM	DESCRIPTION	PART NO.	QTY.	1	2	3	4	5	6	7	8	9
1	Base Welded Assembly (Below Code 9900)	L6598 Ø	1	X								
1	Base Welded Assembly (Above Code 9900)	L6598-1	1	X								
2A	Fan Baffle	L6247	1	X								
2B	Self Tapping Screw	S8025-65	4	X								
3	Fan	M6819-7	1	X								
4A	Hex Nut (#10-32 Hex Nut) or (#8-32 Hex Nut)	CF000011 CF000042	4 4	X X								
4B	Lock Washer	T9695-1	8	X								
4C	Plain Washer	S9262-27	4	X								
5	Fan Motor	M9983-6	1	X								
6A	Fan Motor Mounting Bracket (Below Code 9900) (Not Shown)	M14161	1	X								
6A	Fan Motor Mounting Bracket (Right (Above Code 9900)	L9009-1	1	X								
6B	Fan Motor Mounting Bracket (Left) (Above Code 9900)	L9009-2	1	X								
6C	Fan Motor Stiffener Bracket (Not Shown) (Below Code 9900)	M13458	1	X								
7A*	Roof (Below Code 9900)	M12352-6	1	X								
7A*	Roof (Above Code 9900)	M12352-17	1	X								
7B	Self Tapping Screw	S8025-65	10	X								
7C	Cover Seal	S12934	1	X								
8A*	Case Side (Below Code 9900)	M14065-3	2	X								
8A*	Case Side (Above Code 9900)	M14065-8	2	X								
8B	Self Tapping Screw	S8025-65	12	X								
	* When placing a order, identify by color.											

#

Ø This part is obsolete and no longer available.

DC-1000



12-07-2000

