

**Product Data – Manipulators****Preston-Eastin Model MA-44 LD****Capacity**

- Weight: 100 pounds on each or either end
- Travel: 4 feet actual vertical and horizontal travel

**Vertical axis**

- Construction: Rectangular structural steel tubing with continuously welded roundways
- Motor: 1/4 HP AC brakemotor
- Lift speed: 36 inches per minute
- Rollers: Hardened steel on eccentric shafts
- Safety: Spring-applied locking device limits uncontrolled vertical travel

**Horizontal axis**

- Construction: Rectangular structural steel tubing with continuously welded roundways
- Drive: Rack and pinion drive with 8 inch handwheel
- Rollers: Hardened steel on eccentric shafts

**Base**

- Construction: Welded steel
- Bearings: Tapered-roller bearings
- Lock: One friction lock
- Travel car: Manual travel car is standard

**Control**

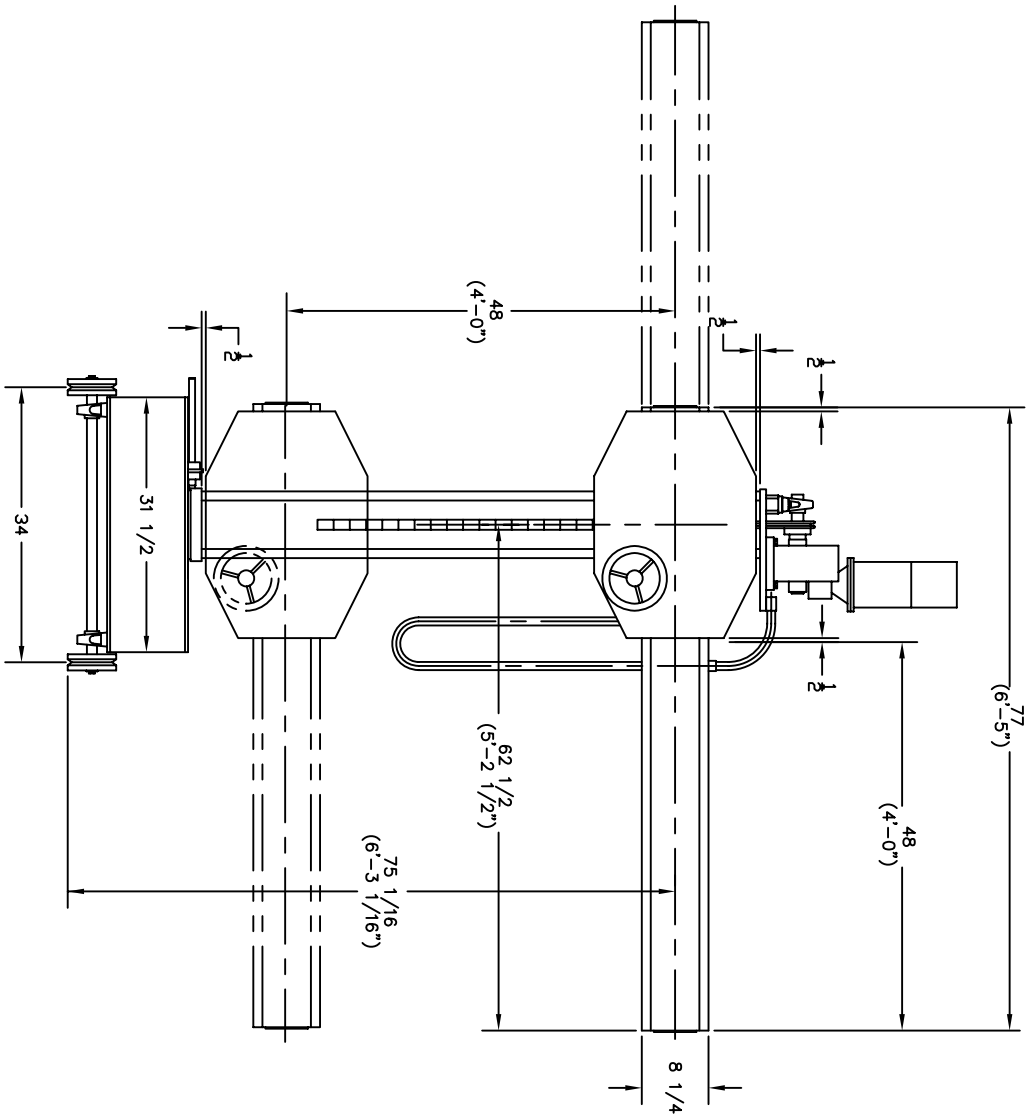
- Pendant: Remote pendant with 30-foot cable
- Optional cable lengths: Available
- Mast Up/Down: Two momentary pushbuttons
- Power: 115V, single phase, 60 hertz

**Weight**

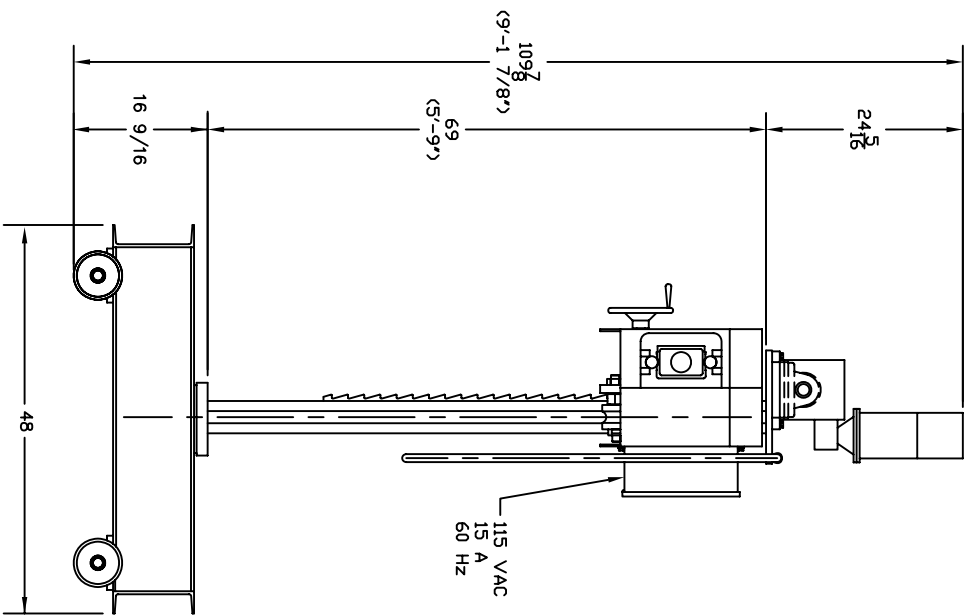
- Manipulator and travel car: 950 pounds

**Options**

- Additional travel, vertical or horizontal
- Powered ram, 1/4 HP, 60 ipm
- Powered travel car and track
- Digital LED ram speed indicator



4'-0" VERTICAL TRAVEL  
 4'-0" HORIZONTAL TRAVEL



<b>PRESTON-EASTIN INC.</b> OKLAHOMA		<b>DIMENSIONAL OUTLINE</b> MA-44LD	
TULSA THIS DRAWING AND THE DESIGNS HEREIN ARE THE PROPERTY OF PRESTON-EASTIN INC. REPRODUCTION AND/OR USE WITHOUT WRITTEN PERMISSION IS PROHIBITED.	MODEL B.J.K.	DATE 12-02-96	10295
	1 OF 2	8/04	8/04