

Product Data – Manipulators**Preston-Eastin Model MA-66 LD****Capacity**

- Weight: 100 pounds on each or either end
- Travel: 6 feet actual vertical and horizontal travel

Vertical axis

- Construction: Rectangular structural steel tubing with continuously welded roundways
- Motor: 1/4 HP AC brakemotor
- Lift speed: 36 inches per minute
- Rollers: Hardened steel on eccentric shafts
- Safety: Spring-applied locking device limits uncontrolled vertical travel

Horizontal axis

- Construction: Rectangular structural steel tubing with continuously welded roundways
- Drive: Rack and pinion drive with 8 inch handwheel
- Rollers: Hardened steel on eccentric shafts

Base

- Construction: Welded steel
- Bearings: Tapered-roller bearings
- Lock: One friction lock
- Travel car: Manual travel car is standard

Control

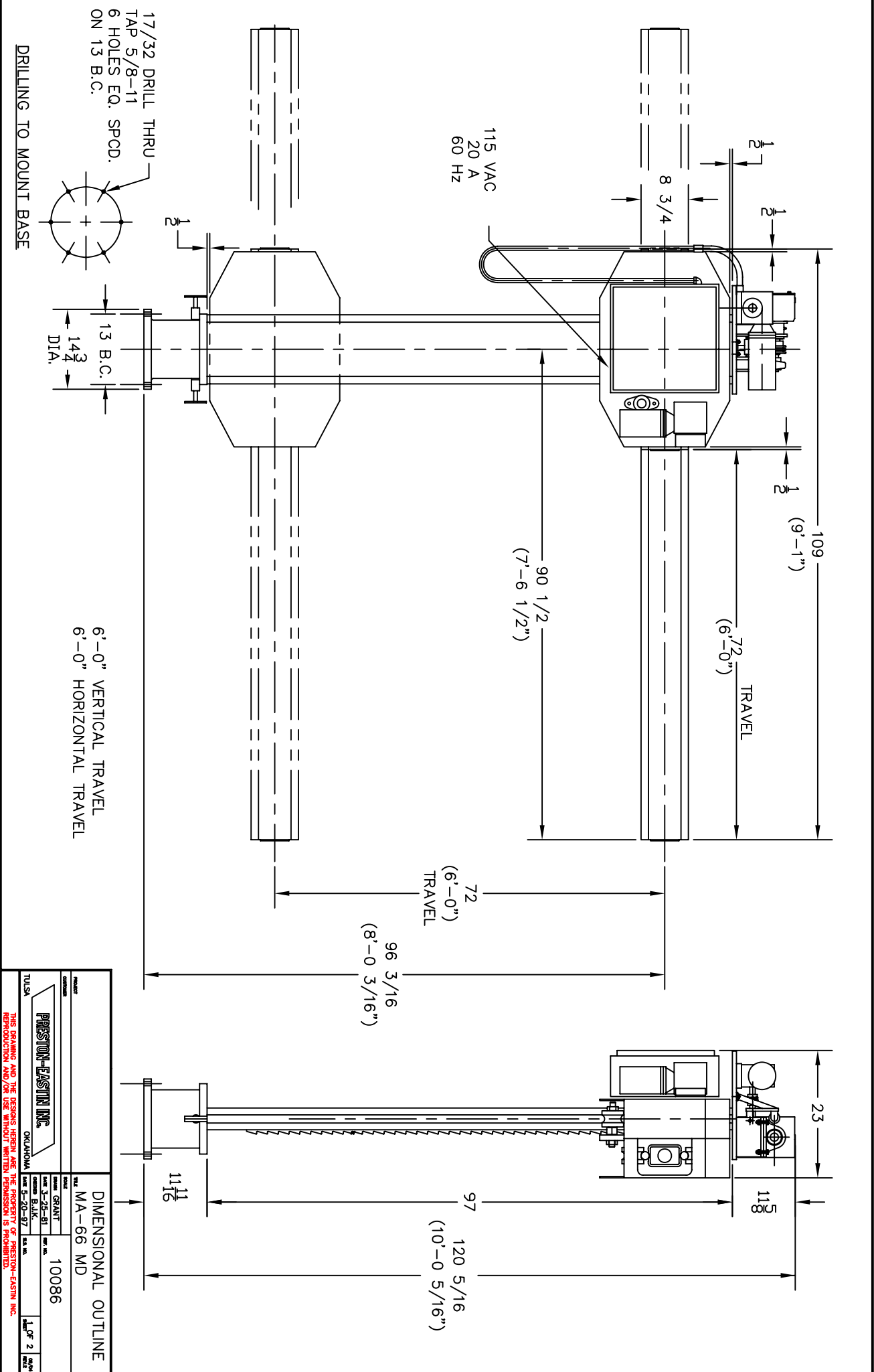
- Pendant: Remote pendant with 30-foot cable
- Optional cable lengths: Available
- Mast Up/Down: Two momentary pushbuttons
- Power: 115V, single phase, 60 hertz

Weight

- Manipulator and travel car: 1250 pounds

Options

- Additional travel, vertical or horizontal
- Powered ram, 1/4 HP, 60 ipm max
- Powered travel car and track
- Digital LED ram speed indicator



PRESTON-EASTON INC. OKLAHOMA		DIMENSIONAL OUTLINE FILE MA-66 MD	
TULSA OKLAHOMA	GRANT DATE 3-25-81 BY B.J.K. FILE NO. 5-20-97	10086	1 OF 2 SHEETS

THIS DRAWING AND THE DESIGNS HEREIN ARE THE PROPERTY OF PRESTON-EASTON INC. REPRODUCTION AND/OR USE WITHOUT WRITTEN PERMISSION IS PROHIBITED.