

Product Data – Manipulators**Preston-Eastin Model MA-1212 HD****Capacity**

- Weight: 750 pounds on each or both ends; 1500 lbs total
- Travel: 12 feet actual vertical and horizontal travel

Vertical axis

- Construction: Structural steel with continuously welded roundways
- Motor: 3/4 HP AC
- Lift speed: 40 inches per minute
- Rollers: Hardened steel on eccentric shafts
- Safety: Spring-applied locking device limits uncontrolled vertical travel

Horizontal axis

- Construction: Structural steel with continuously welded roundways
- Motor: 3/4 HP variable speed DC
- Ram speed: 3 to 90 inches per minute
- Ram speed accuracy: 2% of base speed
- Rollers: Hardened steel on eccentric shafts

Base

- Construction: Welded steel
- Bearings: Tapered-roller bearings
- Locks: Two friction locks
- Standard base plate: Sixteen 7/8 inch holes on a 22-1/8 inch bolt circle

Control

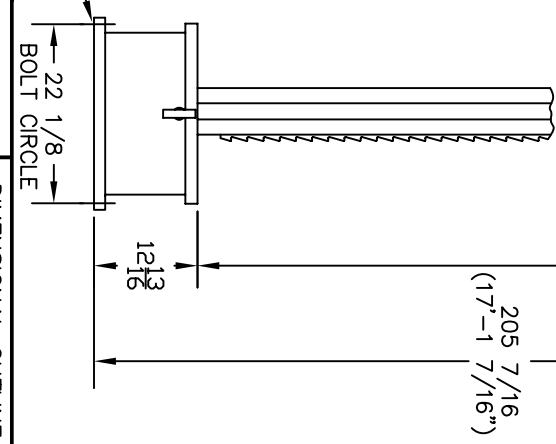
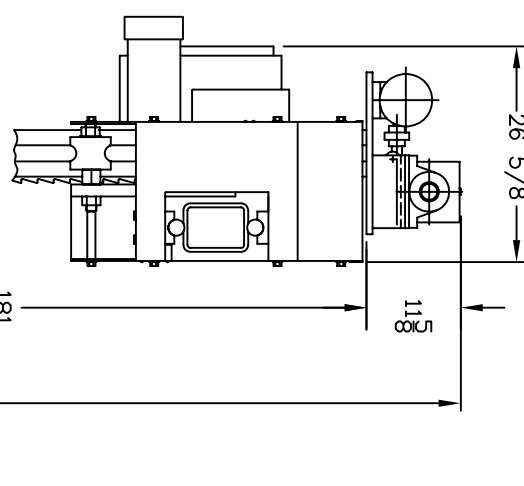
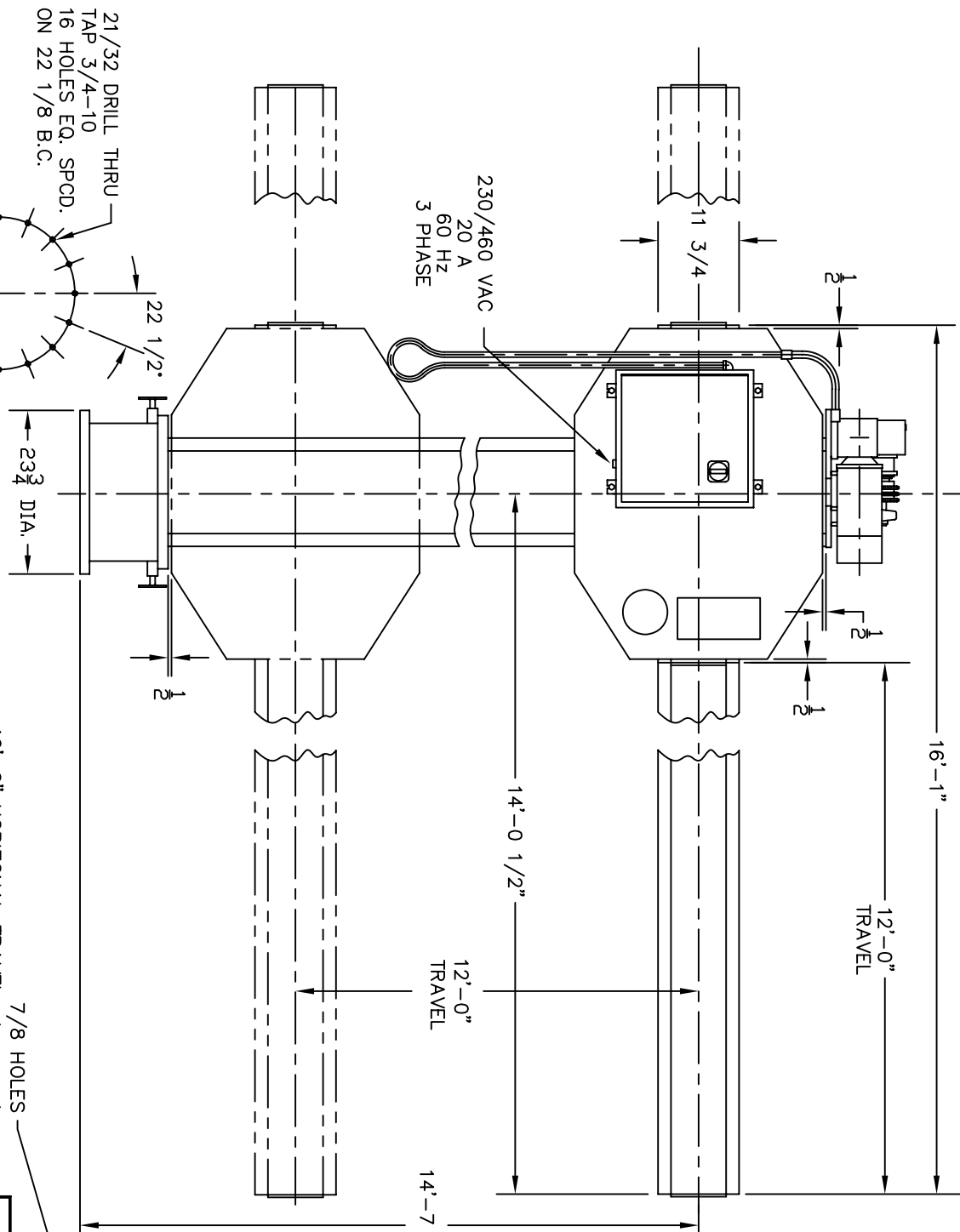
- Pendant: Remote pendant with 30-foot cable
- Optional cable lengths: Available
- Ram speed control: One-turn potentiometer
- Ram Weld/Rapid Traverse: Two position selector switch
- Ram Fwd/Off/Rev: Three position selector switch
- Ram Start/Stop: Two individual pushbuttons
- Mast Up/Off/Down: Three position selector switch
- Power: 240/480V, three phase, 60 hertz

Weight

- Manipulator: 5400 pounds
- Optional free-standing base: 1270 pounds
- Optional travel car, 20' track: 7100 pounds

Options

- Additional travel, vertical or horizontal
- Powered travel car and track, (TCP-56 and TSP-56)
- Free-standing, four-leg base
- Digital LED ram speed indicator



21/32 DRILL THRU
 TAP 3/4-10
 16 HOLES EQ. SPCD.
 ON 22 1/8 B.C.

DRILLING TO MOUNT BASE

		PRESTON-EASTON INC. OKLAHOMA	
PROJECT MA-1212	DRAWING NO. 10019	DATE 8-1-80	DESIGNED BY B.J.K.
TULSA THIS DRAWING AND THE DESIGNS HEREIN ARE THE PROPERTY OF PRESTON-EASTON INC. REPRODUCTION AND/OR USE WITHOUT WRITTEN PERMISSION IS PROHIBITED.	CHECKED BY GRANT	DATE 10-4-00	DRAWN BY B.J.K.