



**Specification Data**  
**Self Aligning Rotators**  
**Capacity : 60/100 Tonnes**

**A&N** Self Aligning Rotators are robustly designed and built to withstand the harsh and rugged environments expected of such applications and permits rollers to align themselves to the work-piece without the need for manual pre-adjustment irrespective of ovality or irregularity. It uses a 520mm diameter 178mm width, replaceable polyurethane tyre mounted onto a cast steel drum for durability and superior traction.

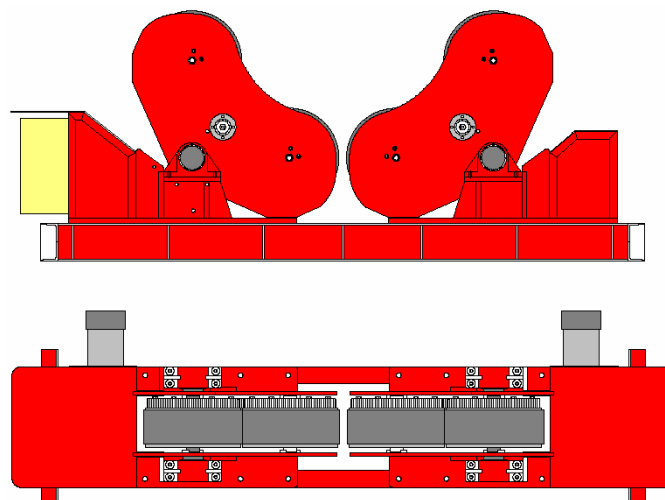
On the powered model both tyres are simultaneously driven by an AC gear motor fitted with inverter control box. A hand held low voltage control pendant on a 10-metre cable provides the operator with a full control of the rotator including a potentiometer for varying the speed, start/stop, forward/reverse and emergency stop.

Standard 3170mm base frame length can accommodate vessel diameters ranging from diameter 670mm to 6570mm. Grit blasting to SA 2.5 for all structural steel and polyurethane paintwork will ensure that your investment provides you with many years of uninterrupted use.

The idler roll has the same dimension to match the powered roll.

**Power rolls specifications:**

Model:	PSR60/100DM-EA
Load Capacity:	60 Metric ton (1 power & 1 idler)
Turn Capacity:	100 metric ton (1 power)
Roll Speed:	126 to 1280mm/min
Vessel diameter:	Min 670mm at 90 degree to Max 6570mm at 45 degree included angle
Center to Center	Skid Frame center to center 1580 / 2080 / 2580mm
Incoming supply:	380/415V/3Phase/16Amps/50/60/hz. (Specify input voltage when ordering)
AC Inverter:	3KW inverter system
Motor rating:	2.2KW x 2
Control voltage:	DC 24 Volt control circuit.
Weight:	Drive - 3900 Kg    Idler – 1900 Kg



..... [www.anplant.com](http://www.anplant.com) .....

**PSR60/100DM**

**Ordering Information and system checklist**

Equipment	Part Number	Description	Qty	Price
Rotator	PSR60/100DM	60-metric ton loading capacity / 100-metric ton turning capacity		
Built-in with either	EA- FA-	3-phase AC motor, Pendant control with 10 M cable. 3-phase AC motor, Pendant control with 10 M cable and foot switch.		

**Optional Item**

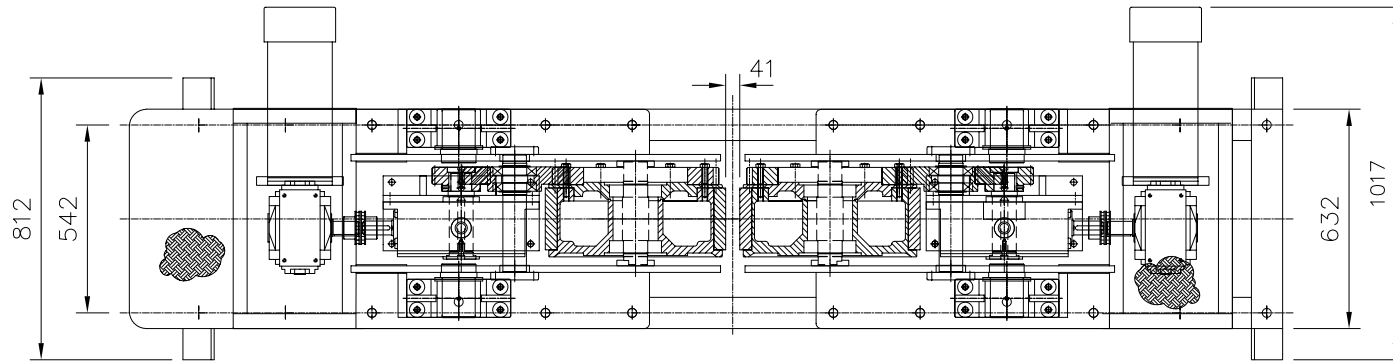
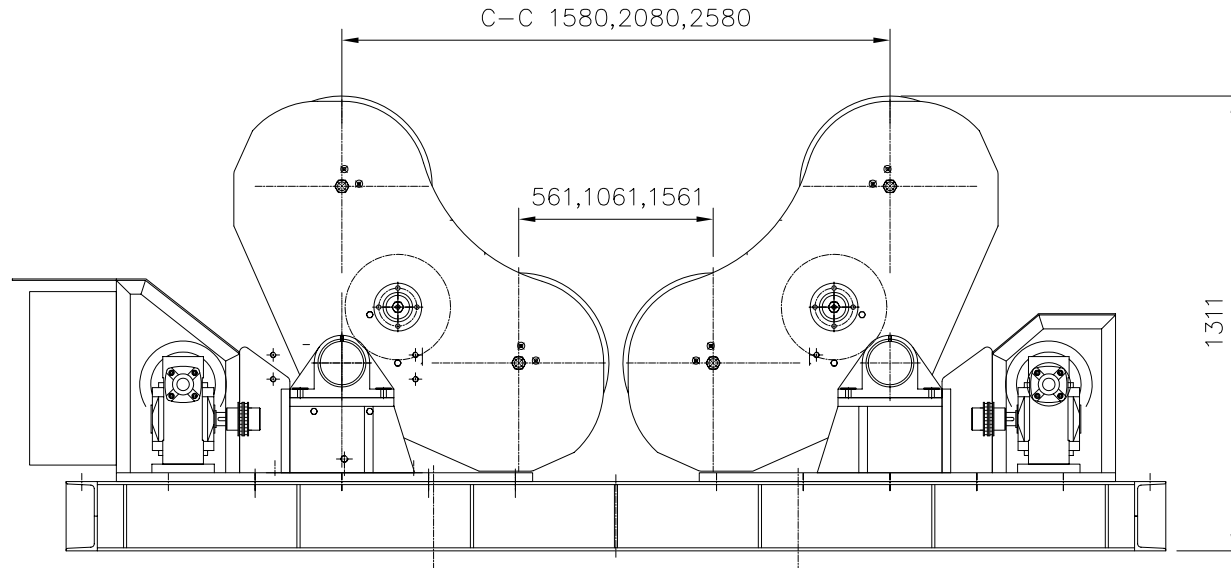
Devices	AC- ACM- Y-	Anti-creep device manual Anti-creep device motorized Lead-screw type C-C adjustment		
<b>Additional</b> Idler roll	ISR60-2580	Skid Frame center to center 2300mm(C-C)		
Travel car	TC- TCM-	Travel car Manual Travel car Motorized		

..... [www.anplant.com](http://www.anplant.com) .....

PSR60/100DM

### Specification for Rotator

1	Model	PSR60/100DM-EA-2580
2	Capacity (Loading)	30 metric tons
3	Capacity (Turning)	100 metric tons
4	Vessel Size (Min.)	ø670mm at 90° Included Angle
5	Vessel Size (Max.)	ø6570mm at 45° Included Angle
6	Tyre Type and Size	Polyurethane, ø20.5"x7"
7	Electrical Panel	Yes
8	Roller Speed	130 to 1295mm/min at 5 to 50Hz
9	Incoming Supply	460V-3P-60Hz
10	Control Voltage	24Vac
11	Roller Drive Control	3KW AC Inverter
12	Control Means	Via Push Button Pendant c/w 10m Cable
13	Roller Drive Motor	2 x AC 1.5KW c/w Force Cooling
14	Travelcar (Bogie)	N.A.
15	Travelcar Speed	N.A.
16	Surface Preparation	Gritblast to SA2.5
17	Painting	2 coats Zinc Phosphate, 1 coat Polyurethane
18	Color	RAL 3003 Red
19	Qty	T.B.A



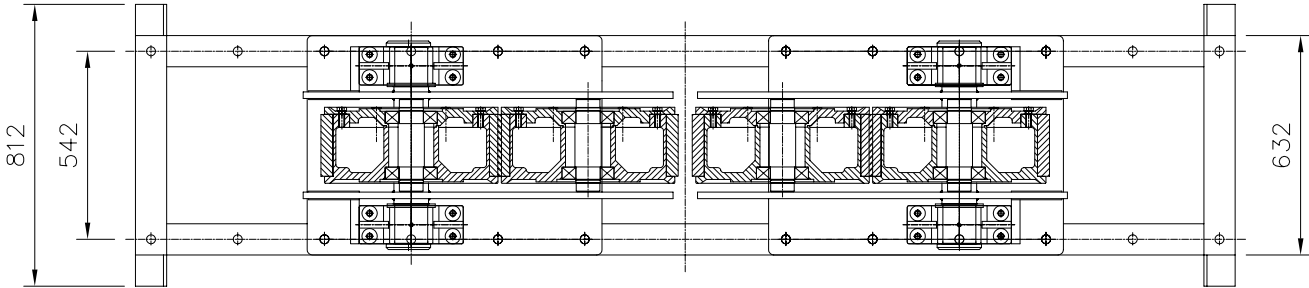
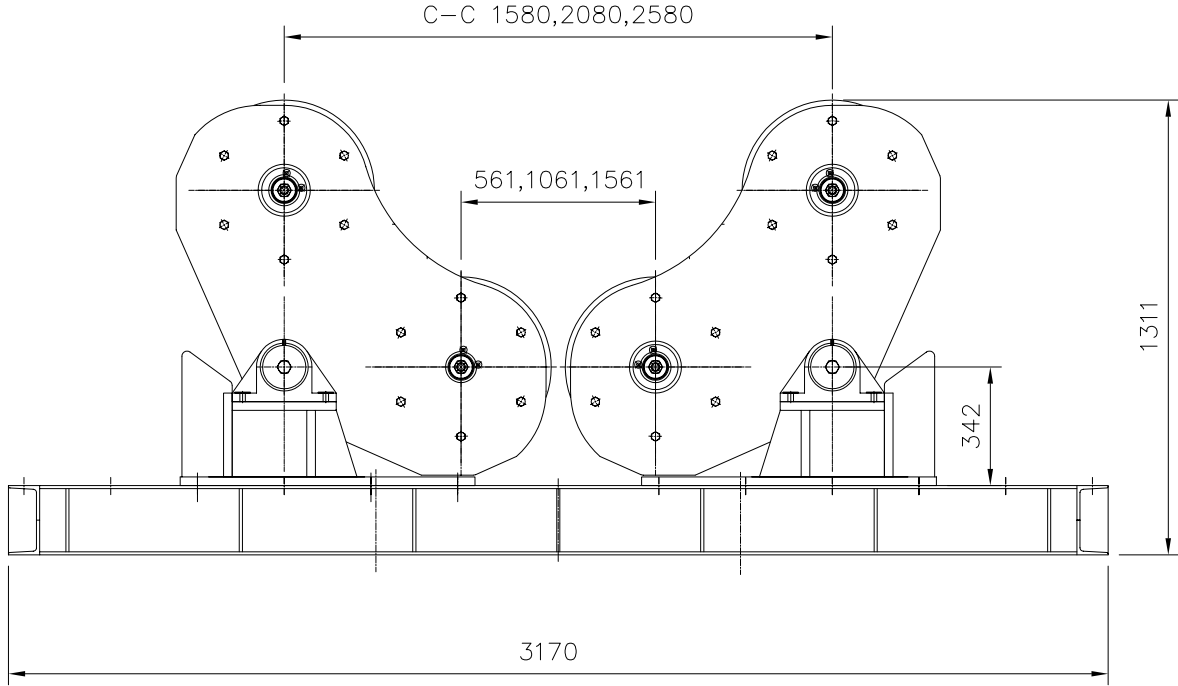
ALL DIMENSIONS IN MM, UNLESS OTHERWISE SPECIFIED.


<b>A&amp;N PLANT</b> <small>ROTATORS - COLUMN BEAMS - POSITINGERS</small>			PROJECT/MODEL :	
			PSR60/100DM-EA-2580	
DRAWN			NAME	DATE
			Kris	22.02.2005
APPROVED				
			CLIENT :	
			-	
			DWG. NAME :	
			ROTATOR GENERAL ARRANGEMENT	
			DWG. NO. :	
			SD-PSR60/100DM-EA-2580	
			SCALE:	
			N.T.S.	
			REVISION:	
			0	
			SHEET NO.:	
			1 OF 1	
<small>THE ORIGINAL AND ALL COPIES OF THIS DRAWING TOGETHER WITH THE COPYRIGHT THEREOF ARE THE SOLE PROPERTY OF R.P.E. PTE. LTD. SINGAPORE</small>				

SIZE: A3

Specification for Rotator

1	Model	ISR60-2580
2	Capacity (Loading)	30 metric tons
3	Capacity (Turning)	N.A.
4	Vessel Size (Min.)	Ø670mm at 90° Included Angle
5	Vessel Size (Max.)	Ø6570mm at 45° Included Angle
6	Tyre Type and Size	Polyurethane, Ø20.5"x7"
7	Electrical Panel	No
8	Roller Speed	N.A.
9	Incoming Supply	N.A.
10	Control Voltage	N.A.
11	Roller Drive Control	N.A.
12	Control Means	N.A.
13	Roller Drive Motor	N.A.
14	Travelcar (Bogie)	N.A.
15	Travelcar Speed	N.A.
16	Surface Preparation	Gritblast to SA2.5
17	Painting	2 coats Zinc Phosphate, 1 coat Polyurethane
18	Color	RAL 3003 Red
19	Qty	T.B.A



 <b>A&amp;N PLANT</b> <small>ROTATORS - COLUMN BEAMS - POSTTENSORS</small>			PROJECT TITLE : ISR60-2580	
DRAWN Kris 22.02.2005			CLIENT : -	
APPROVED			DWG. NAME : ROTATOR GENERAL ARRANGEMENT	
DATE 22.02.2005			DWG. NO : SD-ISR60-2580	
			SCALE: N.T.S.	
			REVISION: 0	
			SHEET NO: 1 OF 1	
THE ORIGINAL AND ALL COPIES OF THIS DRAWING TOGETHER WITH THE COPYRIGHT THEREOF ARE THE SOLE PROPERTY OF R.P.E. PTE. LTD. SINGAPORE				